

# itl boulder

THE LIGHT CENTER OF THE INDUSTRY SINCE 1955

INDEPENDENT TESTING LABORATORIES, INC.  
3386 LONGHORN ROAD, BOULDER, CO 80302 USA

PHONE: (303)442-1255 • FAX: (303)449-5274 • E-MAIL: itl@itlboulder.com • WEBSITE: www.itlboulder.com

REPORT NUMBER: ITL64084

DATE: 01/25/10

PREPARED FOR: BETALED, A DIVISION OF RUUD LIGHTING

CATALOG NUMBER: FLD-EDG-25-\*\*-06-C-UL-BK or BXALSC06C-UT (350mA)

LUMINAIRE: EXTRUDED BLACK PAINTED HOUSING, FABRICATED BLACK PAINTED METAL BALLAST MOUNTING PLATE, CAST BLACK PAINTED METAL END CAPS, FORMED PERFORATED METAL TOP, THREE EXTRUDED FINNED METAL HEAT SINKS, EACH HEAT SINK CONTAINS ONE CIRCUIT BOARD WITH 20 LEDS, CAST BROWN PAINTED METAL TRIM PLATE, ONE CLEAR NON-INTEGRAL PLASTIC LENS BELOW EACH LED.

LAMPS: SIXTY WHITE LIGHT EMITTING DIODES (LEDS), VERTICAL BASE-UP POSITION.

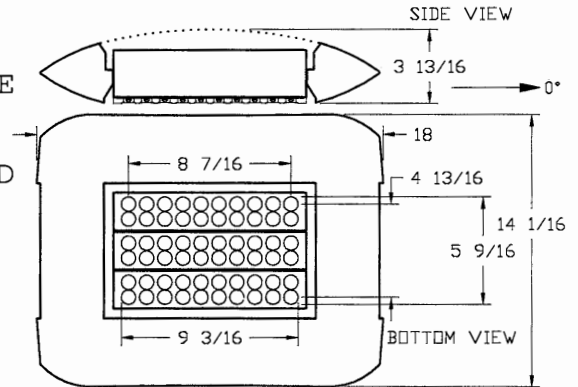
TOTAL INPUT WATTS = 72.3 AT 240.0 VOLTS

LED DRIVER: ADVANCE LED-INTA-700C-140-F30

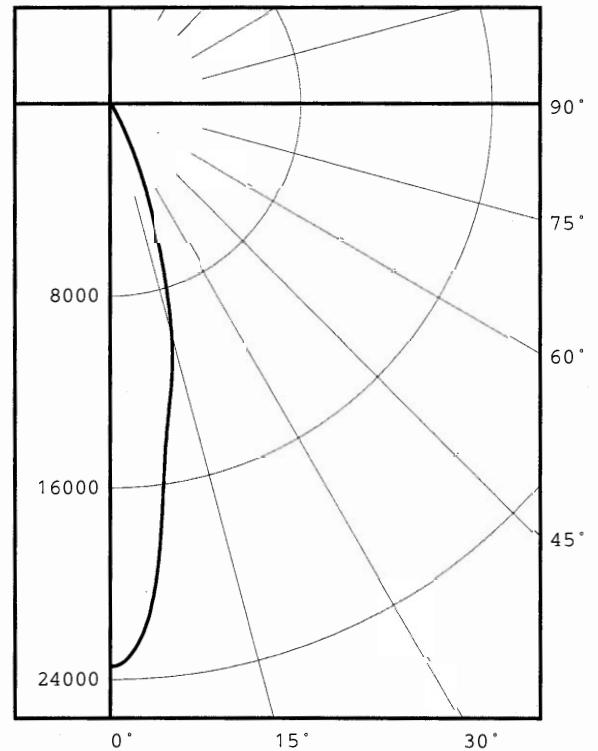
NOTE: DATA SHOWN IS ABSOLUTE FOR THE SAMPLE PROVIDED AT RATED INPUT VOLTAGE (240VAC, 60Hz) TO THE LED DRIVER. CLIENT STATES LEDS HAVE BEEN SEASONED FOR A MINIMUM OF 100 HOURS.

TEST PROCEDURE: IESNA LM-79-08

TEST DISTANCE = 25.25 FEET



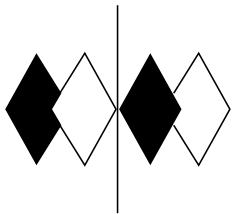
DEG	CANDELA	LUMENS
0	23441	
5	20651	1713
15	9941	2644
25	2605	1253
35	359	259
45	125	100
55	80	70
65	46	45
75	15	16
85	0	0
90	0	0
95	0	0
105	0	0
115	0	0
125	0	0
135	0	0
145	0	0
155	0	0
165	0	0
175	0	0
180	0	0



ZONAL LUMEN SUMMARY		
ZONE	LUMENS	%FIXT
0- 30'	5618	91.9
0- 40'	5879	96.2
0- 60'	6051	99.0
0- 90'	6114	100.0
90-120'	0	0.0
90-130'	0	0.0
90-150'	0	0.0
90-180'	0	0.0
0-180'	6114	100.0

Checked *R. [Signature]*  
Approved *R. [Signature]*

EFFICACY = 84.6 Lm/W  
CIE TYPE - DIRECT



**itl boulder**  
THE LIGHT CENTER OF THE INDUSTRY SINCE 1955

INDEPENDENT TESTING LABORATORIES, INC.  
3386 LONGHORN ROAD, BOULDER, CO 80302 USA

PHONE: (303)442-1255 • FAX: (303)449-5274 • E-MAIL: [itl@itlboulder.com](mailto:itl@itlboulder.com) • WEBSITE: [www.itlboulder.com](http://www.itlboulder.com)

REPORT NUMBER: ITL64084

DATE: 01/25/10

PREPARED FOR: BETALED, A DIVISION OF RUUD LIGHTING

LUMINAIRE SPACING CRITERION = 0.4



INDEPENDENT TESTING LABORATORIES, INC.  
 3386 LONGHORN ROAD, BOULDER, CO 80302 USA

PHONE: (303)442-1255 • FAX: (303)449-5274 • E-MAIL: itl@itlboulder.com • WEBSITE: www.itlboulder.com

REPORT NUMBER: ITL64084

DATE: 01/25/10

PREPARED FOR: BETALED, A DIVISION OF RUUD LIGHTING

COEFFICIENTS OF UTILIZATION - ZONAL CAVITY METHOD

EFFECTIVE FLOOR CAVITY REFLECTANCE 0.20

RC	80				70				50			30			10			0
RW	70	50	30	10	70	50	30	10	50	30	10	50	30	10	50	30	10	0
0	119	119	119	119	116	116	116	116	111	111	111	106	106	106	102	102	102	100
1	115	112	110	108	112	110	108	107	106	105	103	102	101	100	99	98	97	96
2	110	106	103	100	108	105	102	99	102	99	97	99	97	95	96	94	93	92
3	106	101	97	94	104	100	96	93	97	94	92	95	93	90	93	91	89	88
4	103	97	92	89	101	96	92	88	94	90	87	92	89	86	90	88	86	84
5	99	93	88	85	98	92	87	84	90	86	84	88	85	83	87	84	82	81
6	96	89	84	81	94	88	84	81	87	83	80	86	82	80	84	81	79	78
7	93	86	81	78	92	85	81	77	84	80	77	83	79	77	82	79	76	75
8	90	82	78	75	89	82	78	75	81	77	74	80	77	74	79	76	74	73
9	87	80	75	72	86	79	75	72	78	75	72	78	74	72	77	74	71	70
10	84	77	73	70	84	77	72	70	76	72	69	75	72	69	75	71	69	68

ALL CANDELA, LUMENS, LUMINANCE, AND VCP VALUES IN THIS REPORT ARE BASED ON ABSOLUTE PHOTOMETRY. THE COEFFICIENT OF UTILIZATION VALUES ARE BASED ON THE TOTAL ABSOLUTE LUMEN OUTPUT OF THIS LUMINAIRE SAMPLE.